

**DOCUMENT 00 90 00
ADDENDUM**

ADDENDUM NO. [1] Date: September 28, 2022

**RE: Western Technical College
Tomah – 1st Floor MA
120 East Milwaukee Street
HSR Project No. 22046**

**FROM: HSR Associates, Inc
100 Milwaukee Street
La Crosse, WI 54603
(608) 784-1830**

To: Prospective Bidders

This addendum forms a part of the Contract Documents and modifies the original Bidding Documents dated September 2022. Acknowledge receipt of this Addendum in the space provided on the bid form. Failure to do so may subject the Bidder to disqualification.

This Addendum consists of [1] page, [3] documents, and [2] 30 x 42 drawings.

REFERENCE DOCUMENT

1. Document PRE-BID MEETING SIGN-IN SHEET
 - a. See the new document included in this addendum.

CHANGES TO BIDDING REQUIREMENTS AND CONDITIONS OF THE CONTRACT

2. Document 00 11 13 ADVERTISEMENT FOR BIDS
 - a. See the new document included in this addendum.
 - b. Added the following sentence to the first full paragraph:

“Bids will not be accepted from general contractors that are not pre-qualified through the Owner’s annual pre-qualification process.”
3. Document 00 11 15 PREQUALIFIED CONTRACTORS
 - a. See the new document included in this addendum.
 - b. Provided the Owner’s list of pre-qualified contractors for reference.

CHANGES TO DRAWINGS

4. Sheet A100 DEMO PLAN, REMODEL PLAN, RCP - 30"x42"
 - a. See the revised sheet included in this addendum. Disregard the previous version.
 - b. See clouded changes regarding wall prep and ceiling scope.
5. Sheet E100 FIRST FLOOR ELECTRICAL PLAN - 30"x42"
 - a. See the revised sheet included in this addendum. Disregard the previous version.
 - b. Revised plan 2/E100: Delete door operators and push stations.

END OF DOCUMENT 00 90 00

Page Intentionally Left Blank

Pre-Bid Meeting Sign-In Sheet

September 27, 2022

PROJECT: WESTERN TECHNICAL COLLEGE
TOMAH – 1ST FLOOR MA
120 EAST MILWAUKEE STREET
TOMAH, WI 54660
HSR PROJECT NO. 22046

BID OPENING: 2:00 PM, October 11, 2022

Name	Company
1. Doug Ramsey	HSR
2. Alyssa Frank	HSR
3. Jay McHenry	WTC
4. JAKE WALSH	B + B Electric
* 5. JOHN BRAUND	BRAUND BUILDERS
* 6. Denny A. Drecht	RHI
7. MIKE ALLEN	FOWLER & HAMMER
8. Bill Huff	Markel & Johnson
9. Toby Bolden	Wiremen Electric
10.	
11.	* not pre-qualified - include
12.	pre-qualification list in addendum
13.	
14.	
15.	
16.	
17.	
18.	
19.	

Page Intentionally Left Blank

**SECTION 00 11 13
ADVERTISEMENT FOR BIDS**

Sealed bids for the construction of:

**WESTERN TECHNICAL COLLEGE
TOMAH - 1ST FLOOR MA
120 EAST MILWAUKEE STREET
TOMAH, WISCONSIN 54660**

will be received by:

**WESTERN TECHNICAL COLLEGE
PHYSICAL PLANT OFFICE
505 9TH STREET NORTH
LA CROSSE, WISCONSIN 54601
JAY MCHENRY - DIRECTOR OF FACILITIES**

until 2:00pm, October 11, 2022, after which they will be opened publicly and read aloud. Bids received after the time set for receipt of bids will not be accepted. Bids will not be accepted via electronic delivery. Bids will not be accepted from general contractors that are not pre-qualified through the Owner's annual pre-qualification process.

In general, the Project consists of an interior remodel of existing medical assistant classroom suite. Work includes removal of selected existing ceiling and flooring, reconfiguration of framed gypsum walls. Work includes wood casework, acoustical ceilings, floor finishes, paint, and a video projection system. Work includes changes to air distribution devices, lighting fixtures, receptacles. Work includes contractor-performed design-build work to add and relocate classroom sinks.

Lump-sum Bids will be received on a SINGLE PRIME CONSTRUCTION CONTRACT FOR THE ENTIRE WORK.

The Project Drawings, Project Manual and other Bidding Documents may be examined at the following locations:

AE's Office: HSR ASSOCIATES, INC.
100 MILWAUKEE STREET
LA CROSSE, WI 54603
608-784-1830

Builder's Exchanges: LA CROSSE, WI
NORTHWEST REGIONAL (EAU CLAIRE/CHIPPEWA FALLS)
WAUSAU, WI
BUILDERS EXCHANGE OF WISCONSIN (APPLETON)
MINNEAPOLIS, MN
ROCHESTER, MN
NORTHERN IA (MASON CITY, IA)
MASTER BUILDERS IA (DES MOINES, IA)
BUILDERS EXCHANGE OF MICHIGAN
CONSTRUCTCONNECT
DODGE DATA & ANALYTICS (WEST ALLIS, WI)

Electronic Bidding Documents (.pdf) will be available from HSR Associates, Inc. via Sharefile electronic distribution and will be distributed to the listed Builders Exchanges. Electronic versions of addenda will be distributed via the same systems.

Hardcopy Bidding Documents may be picked up at HSR Associates' office. Bidders may request shipment of hardcopies by sending a check made out to HSR Associates in the amount of \$20.00. The shipping fee will not be refunded and must be received prior to shipment.

HSR Associates is responsible for distribution of addenda only to those who have requested project documents from HSR in formats described above.

HSR Associates will make AutoCAD files available to the Contractor following award of contract.

HSR Associates maintains a plan holder list at www.hsrassociates.com. This list includes only those who have requested plans from HSR and those who have requested to be added to our list.

Bid Security in the amount of five percent (5%) of the maximum amount of the Bid must accompany each Bid as described in the Project Manual, Instructions to Bidders.

The Owner reserves the right to waive irregularities and to reject any or all Bids. Bids may only be withdrawn in accordance with the Project Manual, Instructions to Bidders.

A pre-bid meeting will be conducted by the Owner and Architect/Engineer to answer questions and to enable bidders to examine conditions at the Project Site. Pre-Bid meeting will occur at 10:00am September 27, 2022 at lobby of Western Technical College's Tomah, Wisconsin building.

By: Jay McHenry

Title: Director of Facilities

Publish Date: Weeks of September 26 & October 3, 2022, La Crosse Tribune.

END OF DOCUMENT 00 11 13

PREQUALIFIED CONTRACTORS

PART 1: GENERAL

1.01 THE FOLLOWING LIST REPRESENTS APPROVED PRIME CONTRACTORS FOR WESTERN TECHNICAL COLLEGE 2022 PROJECTS:

A. APPROVED CONTRACTORS

1. Bernie J. Buchner, Inc.
 - a. 224 Causeway Blvd, La Crosse, WI 54603
 - b. Contact: Todd Buchner
 - c. Phone: 608-784-9000
 - d. Email: toddbuchner@berniebuchnerinc.com
2. Borton Construction, Inc.
 - a. 2 Copeland Ave, Suite 201, La Crosse, WI 54603
 - b. Contact: Paul Borsheim
 - c. Phone: 608-779-0400
 - d. Email: paulborsheim@bortonconstruction.com
3. C.D. Smith Construction, Inc.
 - a. 333 Front Street North, #701, La Crosse, WI 54601
 - b. Contact: Jasen Anhalt
 - c. Phone: 920-960-3047
 - d. Email: janhalt@cdsmith.com
4. Five Star Telecom, Inc.
 - a. 5136 Mormon Coulee Rd, La Crosse, WI 54601
 - b. Contact: Andy Smith
 - c. Phone: 608-796-9088
 - d. Email: asmith@5startel.com
5. Fowler & Hammer, Inc.
 - a. 313 Monitor Street, La Crosse, WI 54603
 - b. Contact: Vittoria Storlie
 - c. Phone: 608-782-6849
 - d. Email: vstorlie@fowlerhammer.com
6. Interstate Roofing & Waterproofing, Inc.
 - a. N5544 Commerce Rd, Onalaska, WI 54650
 - b. Contact: Justin Riley
 - c. Phone: 608-783-2106
 - d. Email: justin@interstate-roofing.com
7. Jackson & Associates, LLC
 - a. 1817 Buerkle Rd, White Bear Lake, MN 55110
 - b. Contact: Bo Schulz
 - c. Phone: 507-421-4277
 - d. Email: bo@jaarofing.com
8. Knutson Construction Services, Inc.
 - a. 5985 Bandel Rd NW, Rochester, MN 55901
 - b. Contact: Tony Joseph
 - c. Phone: 507-280-9788
 - d. Email: tjoseph@knutsonconstruction.com

9. Kreibich Holding, LLC
 - a. 1082 John Street, West Salem, WI 54669
 - b. Contact: Jerod Kreibich
 - c. Phone: 608-792-5271
 - d. Email: kreibichlandscaping@yahoo.com
10. Ledegar Sheet Metal, Inc.
 - a. 525 Rose Street, La Crosse, WI 54603
 - b. Contact: Mike Lind
 - c. Phone: 608-317-4219
 - d. Email: mike@ledegarsheetmetal.com
11. Market & Johnson, Inc.
 - a. 2350 Galloway Street, Eau Claire, WI 54703
 - b. Contact: Jason Plante
 - c. Phone: 715-834-1213
 - d. Email: www.market-johnson.com
12. Mathy Construction Company
 - a. 920 10th Ave North, Onalaska, WI 54650
 - b. Contact: Kevin Christopherson
 - c. Phone: 608-783-6411
 - d. Email: kevin.christopherson@mathy.com
13. McPhillips Bros. Roofing Co.
 - a. 2590 Centennial Drive, No.St. Paul, MN 55109
 - b. Contact: Steve Johnson
 - c. Phone: 651-770-2062
 - d. Email: steve@mcpillipsbros.com
14. P & T Electric, Inc.
 - a. 1122 South Oak Street, La Crescent, MN 55947
 - b. Contact: Paul Siegersma
 - c. Phone: 507-895-8585
 - d. Email: paulptelec@acegroup.cc
15. Quality Roofing, Inc.
 - a. 1507 Laemle Ave, Marshfield, WI 54449
 - b. Contact: Lucas Kramer
 - c. Phone: 715-384-8881
 - d. Email: lucas@groof.com
16. River City Landscape, Inc.
 - a. W8123 Old NA, Holmen, WI 54636
 - b. Contact: Tom Deml
 - c. Phone: 608-526-9780
 - d. Email: tomdeml@rivercitylandscape.com
17. S & S Mechanical, LLC
 - a. 1815 Caledonia, La Crosse, WI 54603
 - b. Contact: Dusty Schultz
 - c. Phone: 608-782-6770
 - d. Email: ssmechanical@centurytel.net

18. Schwickert's Tecta America, LLC
 - a. 330 Poplar Street, Mankato, MN 56001
 - b. Contact: Kerk Johnson
 - c. Phone: 507-322-3774
 - d. Email: kjohnson@schwickerts.com
19. Trane US, Inc.
 - a. 2525 Larson Street, La Crosse, WI 54603
 - b. Contact: Jim Butterfield
 - c. Phone: 608-769-4202
 - d. Email: jim.butterfield@trane.com
20. Tri-State Carpet
 - a. 611 West Ave North, West Salem, WI 54669
 - b. Contact: Steve Wohlwend
 - c. Phone: 608-786-1609
 - d. Email: steve@tri-statecarpets.com
21. Wieser Brothers General Contractor, Inc.
 - a. 200 Twilight Street, La Crescent, MN 55947
 - b. Contact: Brian Pinnow
 - c. Phone: 507-895-8903
 - d. Email: bids@wieserbrothers.com
22. Winona Heating & Ventilating Co.
 - a. 374 East 2nd Street, Winona, MN 55987
 - b. Contact: Timothy Russell
 - c. Phone: 507-452-2064
 - d. Email: trussell@whvr.com
23. Winona Nursery, Inc.
 - a. 1280 Frontenac Drive, Winona, MN 55987
 - b. Contact: McLean Benson
 - c. Phone: 507-452-6237
 - d. Email: info@winonanursery.com
24. Wisconsin Mechanical Solutions, Inc.
 - a. 1045 Indianhead Drive, Mosinee, WI 54455
 - b. Contact: Craig E. Solinsky
 - c. Phone: 715-650-3125
 - d. Email: csolinsky@wimechsolutions.com

END OF SECTION 00 11 15

Page Intentionally Left Blank

Revisions:

No.	Description	Date
A1	Addendum #1	9/27/2022

- PLAN GENERAL NOTES:**
- REFER TO LIFE SAFETY PLANS FOR FIRE RATING LOCATIONS AND ACCESSIBILITY ROUTES.
 - SEE ID SHEETS FOR FLOOR AND WALL FINISH LAYOUTS.
 - LOOSE FURNISHINGS EXCEPT AS NOTED SHALL BE PROVIDED AND INSTALLED BY THE OWNER.
 - FIXED EQUIPMENT IS SHOWN ON THIS PLAN FOR COORDINATION. SEE SHEETS A400 FOR ALL EQUIPMENT NOTES.
 - SEE ACCESSORY AND EQUIPMENT SCHEDULE ON A400 FOR ABBREVIATIONS.
 - VERIFY EXACT SIZE AND LOCATION OF ALL MECHANICAL / PLUMB AND ELEC. OPENINGS - GENERAL CONTRACTOR SHALL BE RESPONSIBLE FOR FINISH AT ALL VISIBLE AREAS. ALL OPENING SHALL BE SEALED AFTER UTILITY INSTALLATION.

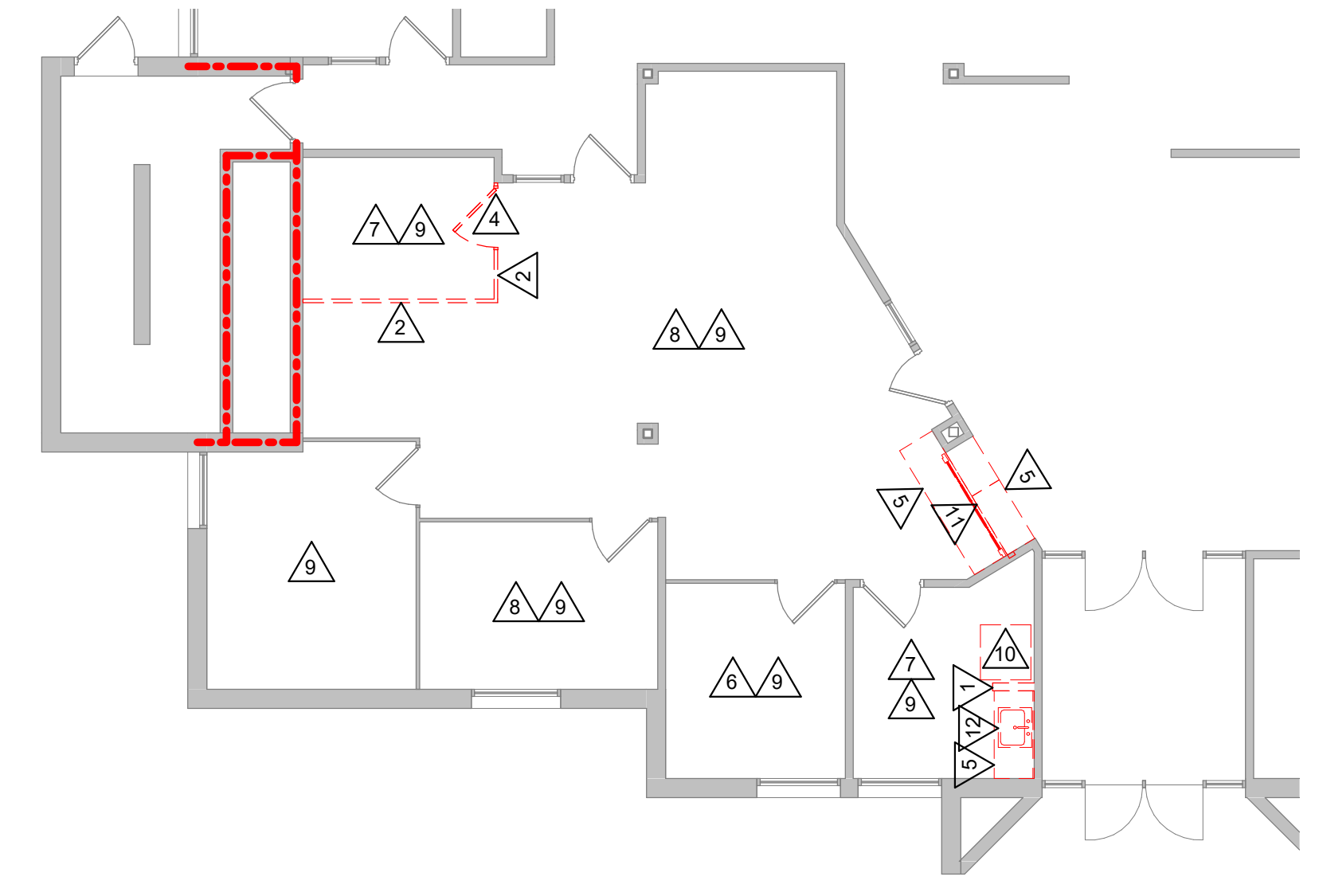
- PLAN LEGEND:**
- (A) SYMBOL INDICATES WALL TYPE - SEE BELOW FOR WALL TYPE DETAILS.
 - (A1) SYMBOL INDICATES CONSTRUCTION NOTE THIS SHEET

- KEY NOTES PLAN**
- NEW SHELVING BY OWNER
 - REINSTALL EXISTING STAINLESS STEEL SINK. INSTALL NEW BLADED HANDLED FAUCET - PLUMBING TO BE DESIGN-BUILD
 - NEW STAINLESS STEEL SINK WITH WRIST BLADE HANDLE FAUCET - PLUMBING TO BE DESIGN-BUILD

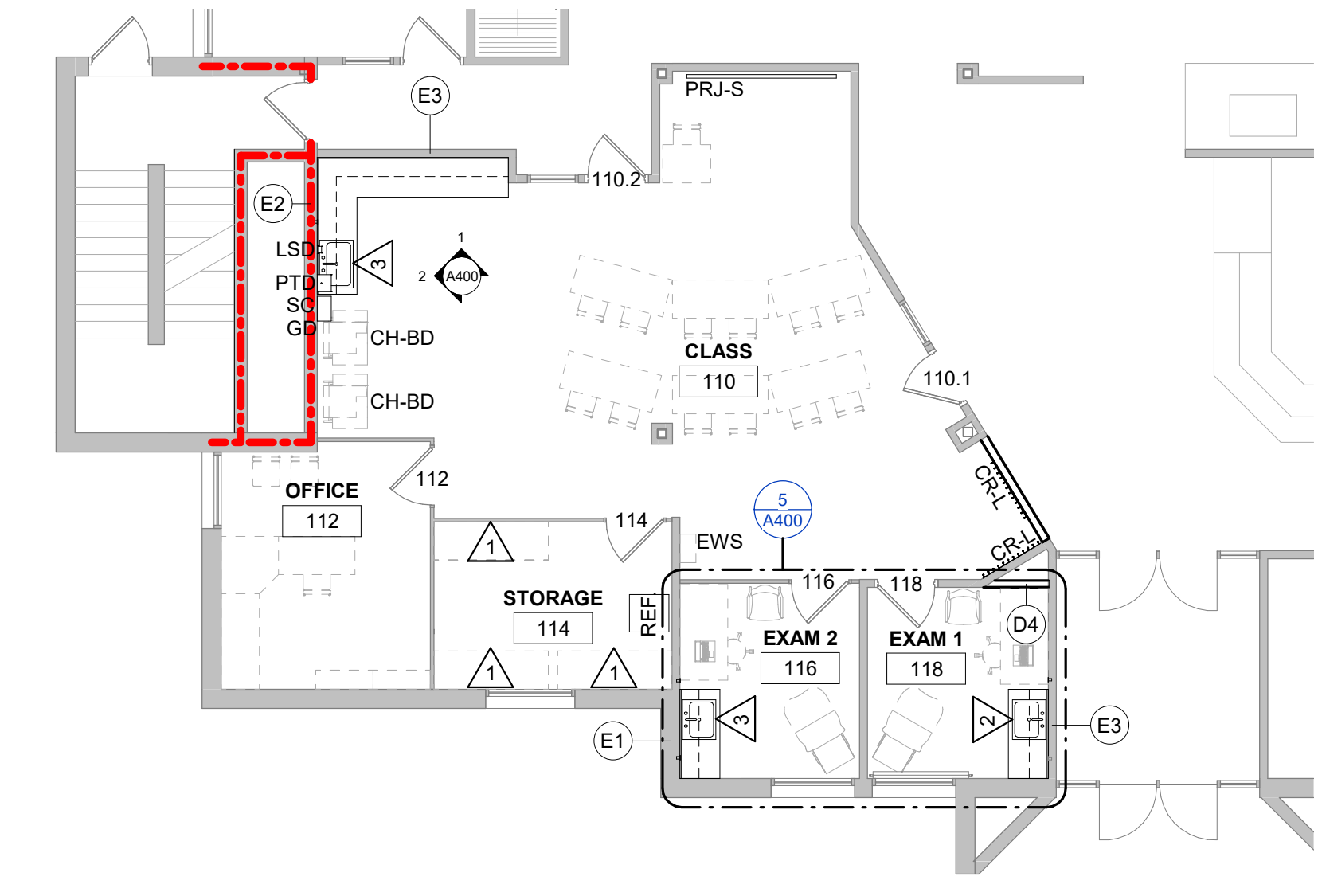
- REMOVAL GENERAL NOTES:**
- ALL ITEMS SHOWN DASHED ON DEMOLITION PLANS SHALL BE REMOVED FROM THE SITE UNLESS OTHERWISE NOTED. REFERENCE MEP DRAWINGS FOR APPLICABLE EQUIPMENT REMOVALS AND MODIFICATIONS. COORDINATE PATCHING AT EQUIPMENT REMOVALS.
 - AT WALL TYPES MATERIALS. PREPARATION FOR NEW FINISHES SHALL INCLUDE, BUT NOT BE LIMITED TO REMOVAL OF EXISTING FINISHES, TAPES, GUESSTMATIC, NAILS AND RELATED ITEMS. PATCHING OF HOLES, INDENTATIONS AND CRACKS FOR AN ACCEPTABLE SURFACE FOR NEW FINISH INSTALLATION. GC TO REMOVE ALL WALL FASTENERS FROM PREVIOUS FIXED FURNITURE AND EQUIPMENT AND THOSE CURRENTLY BEING REMOVED.
 - OWNER WILL REMOVE LOOSE FURNISHINGS AND EQUIPMENT FROM THE WORK AREA PRIOR TO START OF CONSTRUCTION.
 - MAINTAIN ALL EXIT DOORS AND CORRIDORS IN UNOBSTRUCTED OPERABLE CONDITION WITH SAFE PASSAGE AWAY FROM THE BUILDING.
 - ROOM NUMBERS ARE SHOWN ON THIS PLAN FOR INFORMATIONAL AND COORDINATION PURPOSES ONLY.
 - COORDINATE STORAGE LOCATIONS FOR SALVAGED ITEMS WITH OWNER.
 - PROVIDE FLOOR PROTECTION AS SPECIFIED AT DEBRIS REMOVAL PATHS THROUGH BUILDING.

- REMOVAL PLAN LEGEND:**
- (A) SYMBOL INDICATES CONSTRUCTION NOTE THIS SHEET
 - (A1) REMOVE ITEMS NOTED WITH DASHED LINES
 - (A2) SYMBOL INDICATES REMOVAL OF DOOR AND FRAME UNLESS NOTED OTHERWISE

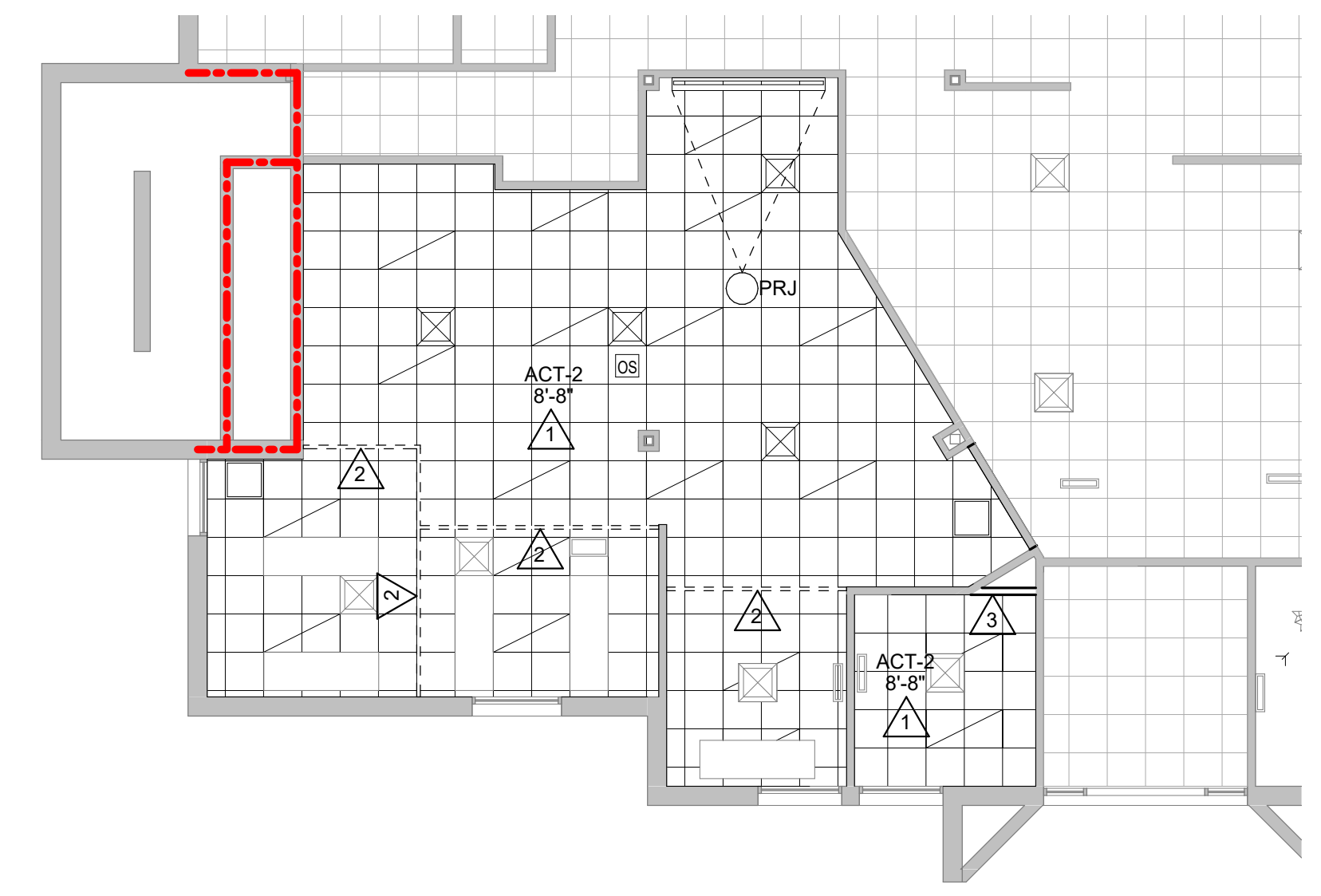
- KEY NOTES REMOVAL**
- REMOVE STUD PARTITION
 - DEMOUNTABLE PARTITION REMOVED BY OWNER - NIC
 - EXISTING DOOR AND FRAME REMOVED BY OWNER - NIC
 - REMOVE EXISTING CASEWORK
 - REMOVE CPT FLOORING
 - REMOVE WFL FLOORING - ALT. 2
 - REMOVE CPT FLOORING - ACT. 2
 - REMOVE ACT CEILING TILES - ALT. 1
 - REMOVE AND SALVAGE REFRIGERATOR. RETURN TO OWNER
 - REMOVE AND SALVAGE OVERHEAD COOL. RETURN TO OWNER
 - REMOVE AND SALVAGE PLUMBING FIXTURE FOR REUSE



1 FIRST FLOOR DEMO PLAN
1/8" = 1'-0"



2 FIRST FLOOR REMODEL PLAN
1/8" = 1'-0"

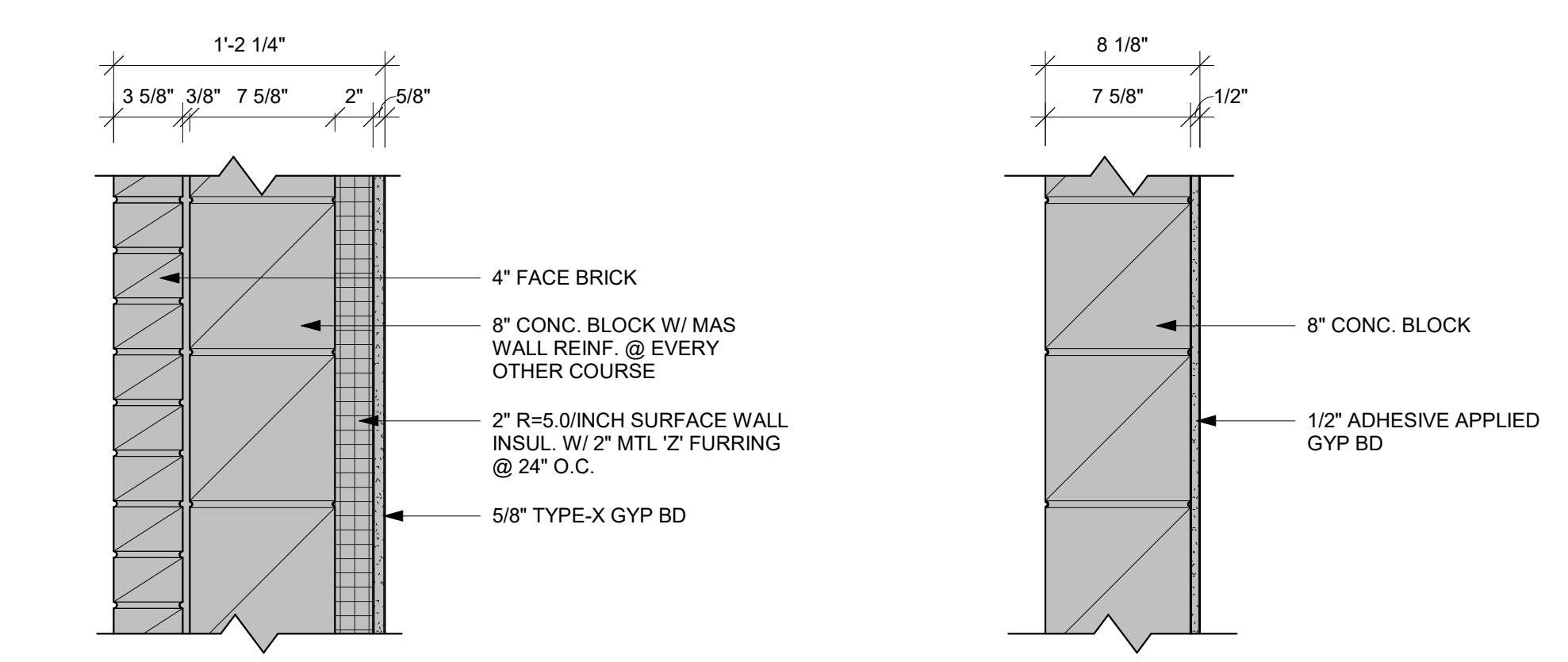


3 FIRST FLOOR RCP
1/8" = 1'-0"

- RCP GENERAL NOTES:**
- REFER TO MECHANICAL AND PLUMBING CEILING ACCESS PANEL LOCATIONS & SIZES.
 - SEE MECHANICAL FOR CEILING GRILLE INFORMATION.
 - SEE ELECTRICAL FOR LIGHTING TYPES.
 - ALL REMAINING ANNULAR SPACE AROUND ITEMS PENETRATING WALLS SHALL BE NEATLY SEALED. PENETRATIONS OF FIRE RATED WALLS SHALL BE FIRE STOPPED WITH THE SAME AS THE WALL.
 - REFER TO INTERIOR DESIGN SHEETS FOR OTHER FINISHES.
 - CONFIRM EXACT LOCATION OF OVERHEAD PROJECTORS AND OTHER CEILING MOUNTED EQUIPMENT WITH OWNER / MANUFACTURER PRIOR TO INSTALLATION. SEE EQUIPMENT PLANS FOR ADDITIONAL EQUIPMENT.
 - CEILING TYPES INSTALLED AS NOTED ON PLANS. SEE SPECIFICATIONS FOR ADDITIONAL SYSTEM INFORMATION. ACT-2-REGULAR EDGE

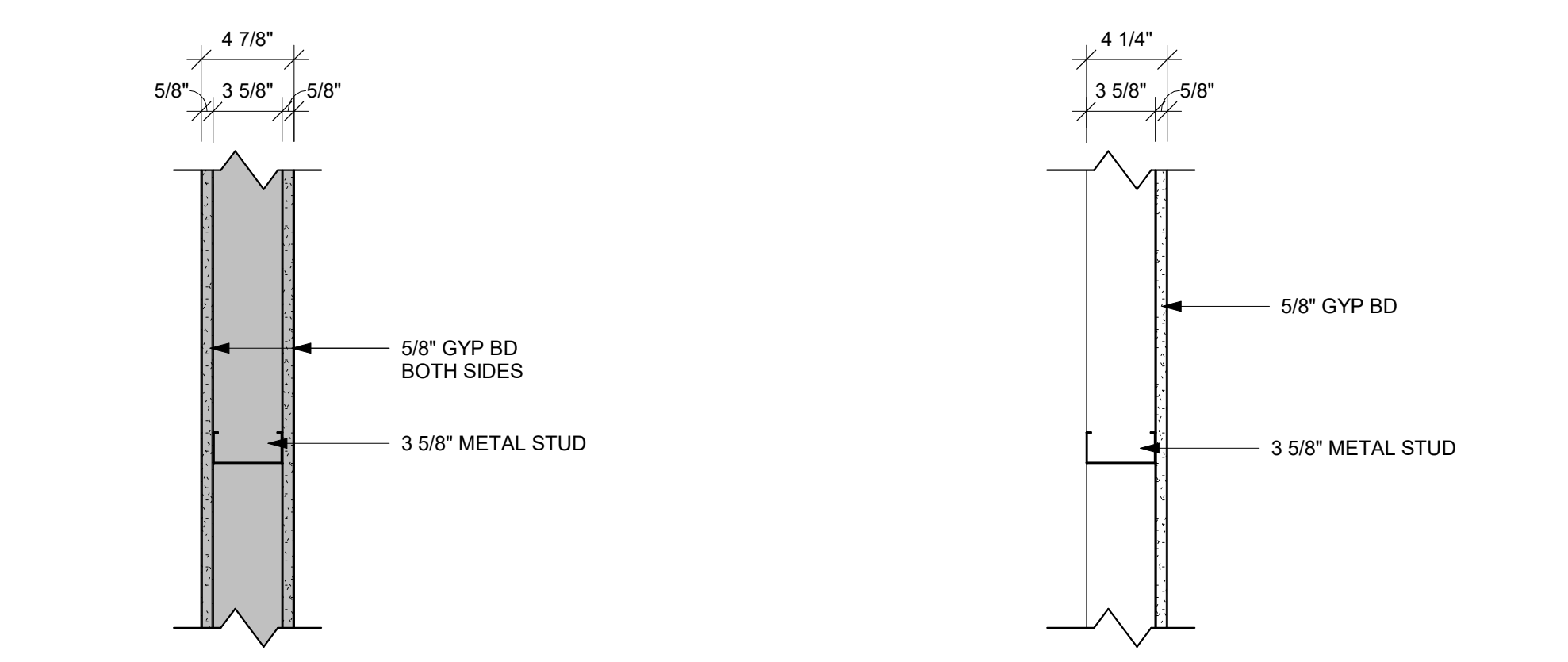
- RCP LEGEND:**
- (A) LIGHT FIXTURE - SEE ELECTRICAL
 - (A1) SUPPLY - SEE MECHANICAL
 - (A2) RETURN - SEE MECHANICAL
 - (A3) RADIANT HEATER - SEE MECHANICAL
 - (A4) CEILING ACCESS PANEL - SEE SPECIFICATIONS

- KEY NOTES RCP**
- NEW ACT CEILING TILES IN EXISTING GRID - ALT. 1
 - NEW ACT CEILING TO BE CONSIDERED OVER EXISTING DEMOUNTABLE PARTITIONS BETWEEN DASHED - ALT. 1
 - RECONFIGURE GRID AND ACT CEILING TILE AT NEW WALL



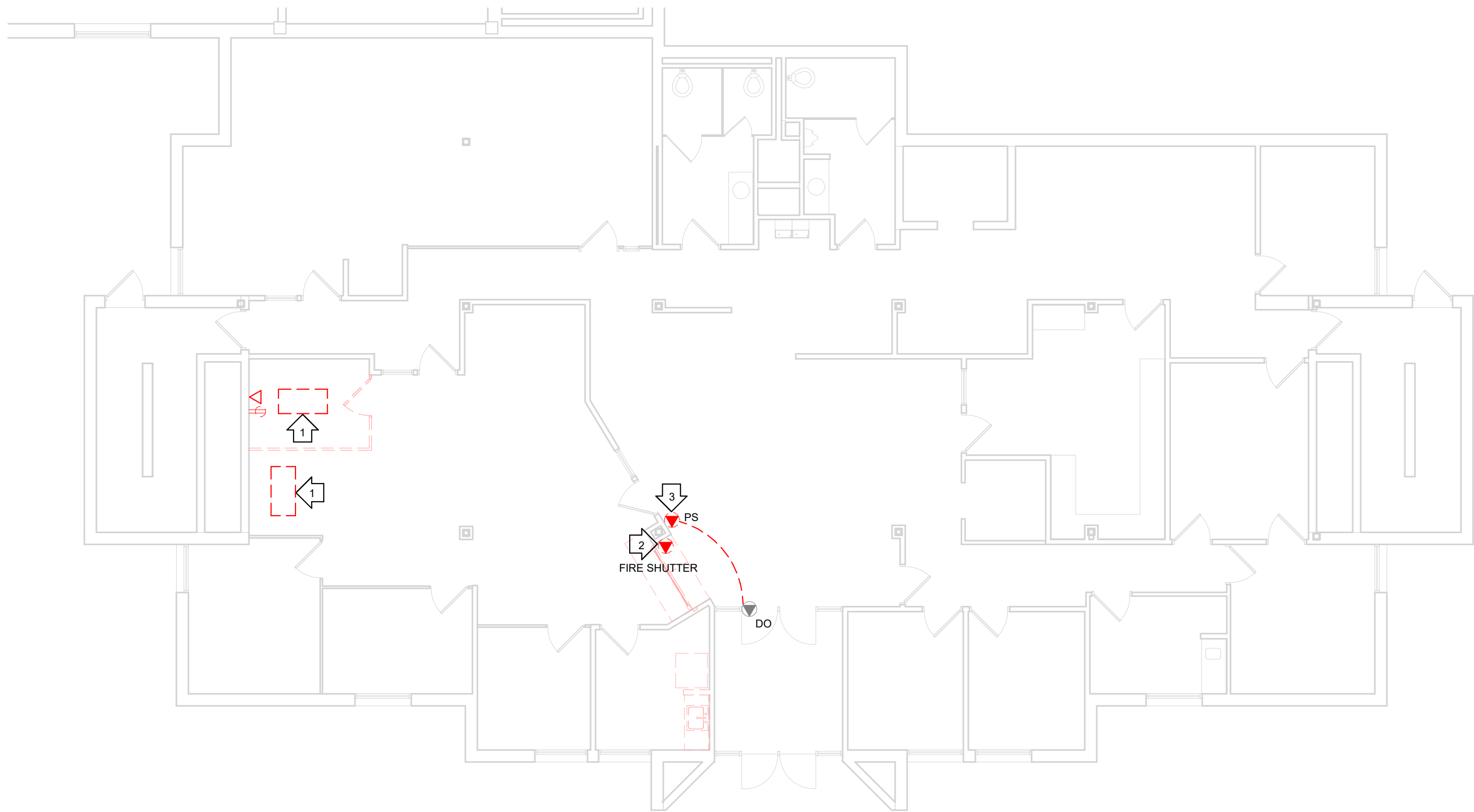
PARTITION TYPE	STUD SPACING	PARTITION WIDTH ACTUAL	PARTITION WIDTH NOMINAL	FIRE RATING	UL #	STC RATING
E1	-	1'-2 1/4"	1'-2"	-	-	-

PARTITION TYPE	STUD SPACING	PARTITION WIDTH ACTUAL	PARTITION WIDTH NOMINAL	FIRE RATING	UL #	STC RATING
E2	16" O.C.	8 1/8"	8"	1 HR	-	-

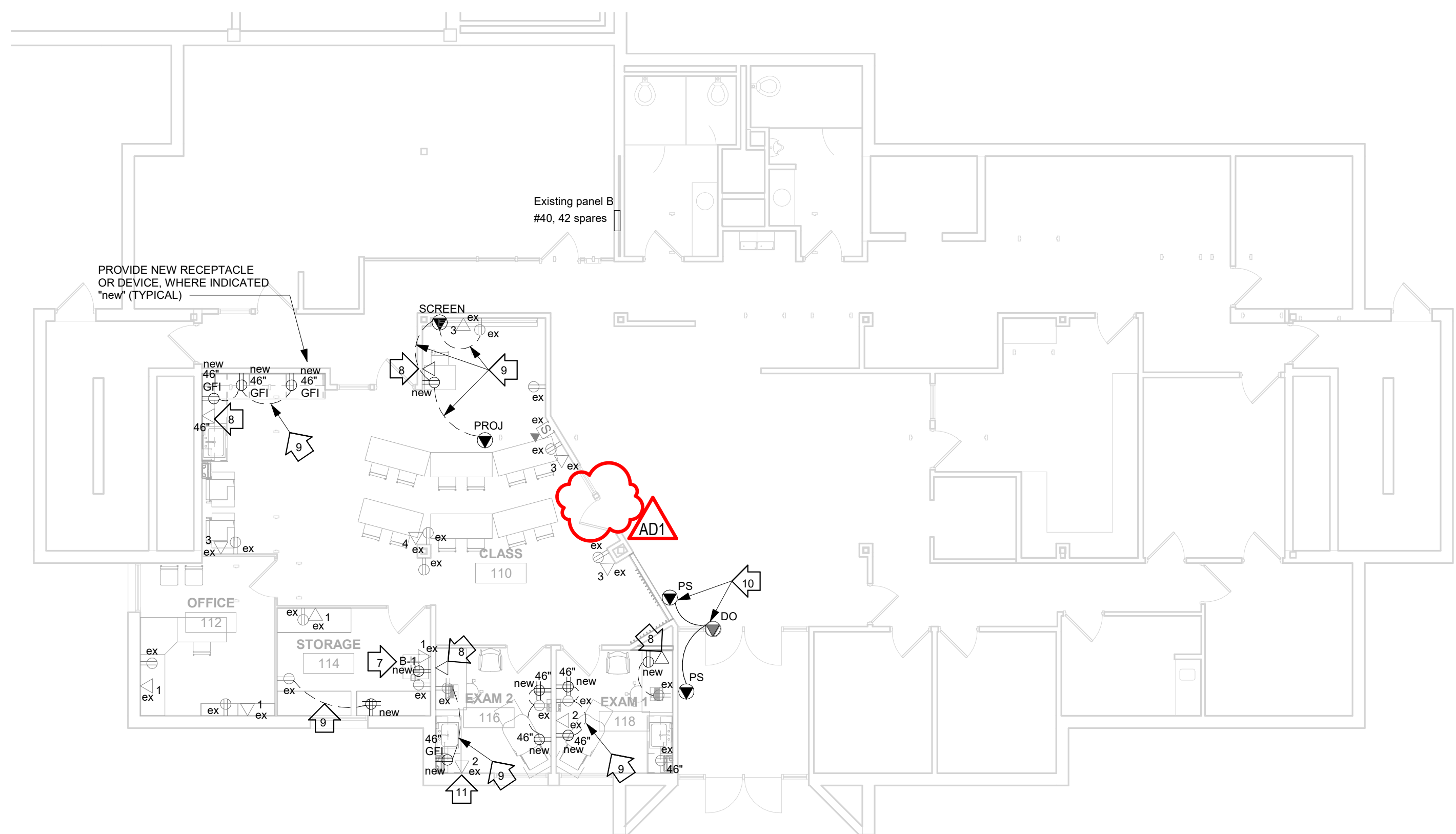


PARTITION TYPE	STUD SPACING	PARTITION WIDTH ACTUAL	PARTITION WIDTH NOMINAL	FIRE RATING	UL #	STC RATING
D4	16" O.C.	4 7/4"	5"	-	-	33

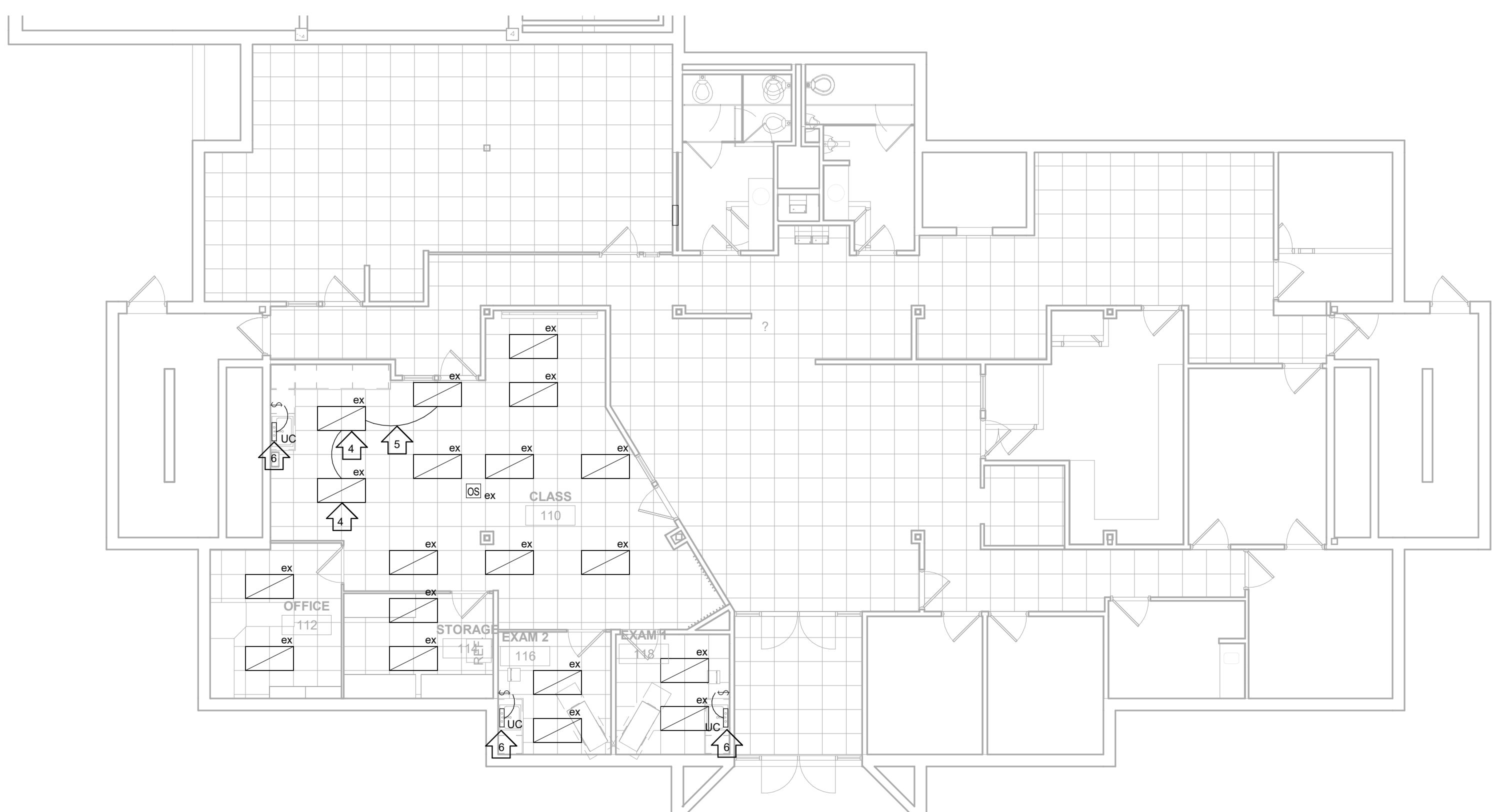
PARTITION TYPE	STUD SPACING	PARTITION WIDTH ACTUAL	PARTITION WIDTH NOMINAL	FIRE RATING	UL #	STC RATING
D4	16" O.C.	4 1/4"	4"	-	-	33



1 FIRST FLOOR ELEC. DEMO PLAN
1/8" = 1'-0"



2 FIRST FLOOR POWER PLAN
1/8" = 1'-0"



3 FIRST FLOOR LIGHTING PLAN
1/8" = 1'-0"

SPECIFIC NOTES :

- REMOVE LIGHT FIXTURE AND SALVAGE FOR REINSTALLATION.
- REMOVE ELECTRICAL CONNECTIONS TO FIRE SHUTTER AND REMOVE FIRE ALARM WIRING.
- REMOVE PUSH STATION FOR DOOR OPERATOR AND REINSTALL CLOSER TO ENTRANCE DOOR.
- REINSTALL EXISTING LIGHT FIXTURE AT NEW LOCATION.
- EXTEND EXISTING LIGHTING CIRCUIT AND DIMMING CIRCUIT TO RELOCATED LIGHT FIXTURES.
- PROVIDE NEW UNDERCABINET LIGHT. EXTEND EXISTING ROOM LIGHTING OR RECEPTACLE CIRCUIT TO LIGHT.
- PROVIDE NEW BRANCH CIRCUIT FROM EXISTING PANEL B.
- PROVIDE 1" RACEWAY TO ABOVE CEILING SPACE FOR COMPUTER WIRING BY WTC.
- EXTEND EXISTING ROOM RECEPTACLE CIRCUIT TO NEW RECEPTACLES.
- REINSTALL PUSH STATION AT NEW LOCATION. PROVIDE INTERCONNECTING CONDUIT AND WIRING TO DOOR OPERATOR.
- REMOVE DATA CABLES TO ABOVE CEILING SPACE. REROUTING OR RELOCATION OF CABLES IS BY WTC IT DEPARTMENT.

ELECTRICAL SYMBOLS

○	LIGHTING FIXTURE - WALL BRACKET *	⊖	STANDARD SINGLE RECEPTACLE *
○	LIGHTING FIXTURE DOWNLIGHT - SURFACE TYPE *	⊖	STANDARD DUPLEX RECEPTACLE *
⊖	LIGHTING FIXTURE DOWNLIGHT - RECESSED *	⊖	"GFI" GROUND FAULT INTERRUPTING "WP" WEATHERPROOF COVER "WR" WEATHER RESISTANT
⊖	LIGHTING FIXTURE(S) - EMERGENCY BATTERY	⊖	DOUBLE DUPLEX RECEPTACLE *
⊖	LIGHTING FIXTURE (2x2) - SURFACE TYPE *	⊖	EQUIPMENT CONNECTION
⊖	LIGHTING FIXTURE (2x2) - RECESSED *	⊖	PANELBOARD, TERMINAL CABINET
⊖	LIGHTING FIXTURE (2x2) - EMERGENCY BATTERY	⊖	COMPUTER DATA OUTLET
⊖	LIGHTING FIXTURE (2x4) - SURFACE TYPE *	⊖	FIRE ALARM STROBE UNIT
⊖	LIGHTING FIXTURE (2x4) - RECESSED *	⊖	SMOKE DETECTOR
⊖	LIGHTING FIXTURE (2x4) - EMERGENCY BATTERY	⊖	NOTE NUMBER (REMODEL)
⊖	LIGHTING FIXTURE - OPEN STRIP *	EX	EXISTING DEVICE TO REMAIN OR BE RELOCATED.
⊖	SWITCH - SINGLE POLE		
⊖	3 - 3-WAY SWITCH		
⊖	4 - 4-WAY SWITCH		
⊖	OS - WALL SWITCH OCCUPANCY SENSOR*		
⊖	VS - WALL SWITCH VACANCY SENSOR*		
⊖	D - DIMMER*		

* TYPE AS INDICATED WITH LETTER/NUMBER, REFER TO SPECIFICATIONS OR SCHEDULES.

GENERAL NOTES : REMOVAL

- REMOVE ALL ELECTRICAL DEVICES AND ABANDON WIRING/CONDUIT BACK TO ELECTRICAL PANEL, CABINET, RACK OR TERMINATION BOARD.
- ELECTRICAL CONTRACTOR TO FIELD VERIFY WALLS AND CEILING AND INCLUDE ALL DEVICES FOR REMOVAL.
- MAINTAIN OPERATION OF ALL EXISTING RECEPTACLES AND DEVICES TO REMAIN. PROVIDE NEW HOMERUNS OF CONDUIT/WIRING WHERE REQUIRED.
- PROVIDE COVERPLATES AT ALL OPEN DEVICE AND JUNCTION BOXES.
- DASHED LINES SPECIFIC ITEMS FOR REMOVAL.

GENERAL NOTES : REMODEL

- ALL ELECTRICAL DEVICES SHOWN TO BE NEW UNLESS INDICATED OTHERWISE.
- MAINTAIN OPERATION OF ALL EXISTING ELECTRICAL DEVICES, EXTEND WIRING/CONDUIT AS REQUIRED.
- PROVIDE GROUND CONDUCTOR IN ALL RACEWAYS
- PROVIDE SEPARATE NEUTRAL CONDUCTORS FOR EACH BRANCH CIRCUIT.
- PROVIDE FIRE STOPPING AND SMOKE DRAFT STOPPING AT ALL CONDUIT PENETRATIONS, REFER TO SPECIFICATIONS SECTION 075400 FOR FIRE RESISTIVE AND NON-FIRE RESISTIVE ASSEMBLIES.
- EXTEND EXISTING LIGHTING BRANCH CIRCUITS TO NEW OR RELOCATED LIGHT FIXTURES.
- NEW DATA CABLES OR REROUTING EXISTING DATA CABLES IS BY WTC.

LIGHT FIXTURE SCHEDULE

TYPE	MANUFACTURER	CATALOG NUMBER	DESCRIPTION	VOLT	MOUNTING **				WATTS	COLOR TEMP.	REMARKS
					F	S	P	O			
UC	COLUMBIA LIGHTING	CUC2-CS-ED120	24" UNDERCOUNTER LIGHT	120		*			15	3000/3500K/4000	DIRECT WIRE

* SEE REMARKS
** (F) FLUSH MOUNT; (S) SURFACE MOUNT; (P) PENDANT HUNG; (O) OTHER-SEE REMARKS IN REGARDS TO FIXTURE MOUNTING.

REMARKS:

EQUAL FIXTURES:

- FIXTURES EQUAL IN ALL RESPECTS TO THE SPECIFIED FIXTURES MANUFACTURED BY, COOPER LIGHTING, LITHONIA, HUBBELL SHALL BE CONSIDERED AS EQUAL.

EQUIPMENT SCHEDULE

MARK NUMBER	DESCRIPTION	LOCATION ROOM NUMBER	RATING				WIRING SIZE		REMARKS
			KW	HP	VOLT	PH	CONDUCTORS	GRD.	
DO	DOOR OPERATOR	CLASS 110	-		120	1	2 #12	#12	1
PS	PUSH STATION	CLASS 110	-		120	1	2 #12	#12	1
PROJ	PROJECTOR	CLASS 110	-		120	1	2 #12	#12	
SCREEN	PROJECTOR SCREEN	CLASS 110	-		120	1	2 #12	#12	2

* SEE REMARKS: MCA - MINIMUM CIRCUIT AMPACITY; FLA - FULL LOAD AMPS; MOP - MAXIMUM OVERCURRENT PROTECTION.

REMARKS:

- PROVIDE INTERCONNECTING WIRING/RACEWAY TO PUSH STATIONS AND DOOR OPERATOR.
- INSTALL OPERATOR SWITCH FURNISHED WITH SCREEN, PROVIDE CONDUIT AND WIRING TO SCREEN AND SWITCH.

PANELBOARD SCHEDULE

PANEL NAME	ROOM NO.	MFG. TYPE	MOUNT'G			ELECTRICAL SERVICE	MAINS			BRANCHES			REMARK NUMBER	
			FLUSH	SURFACE	WIDTH		AMP.	LUGS	FEED THRU NO.	AMP. POLE	CIRCUIT NUMBERS	SPACE		
B	SEE PLAN	EXIST.	X			208Y/120 VOLT 3 PH, 4 WIRE	100	X		2	20	1	B-40,42	1

* SEE REMARKS

PANELBOARD SCHEDULE REMARKS:

- EXISTING SPARE CIRCUIT BREAKERS IN PANELBOARD TO FEED NEW BRANCH CIRCUITS.